



Vertical Work Station

Includes:



Table parts:

- Top Plate (bare steel)
- Left and Right Side Plates (black powdercoat finish)
- Center Brace (orange powdercoat finish)
- Adjustable Fence (black powdercoat finish)
- Fixed Fence (bare steel)

Assembly Hardware:

- (18) M6-1.0 Flat Head Screws
- (3) 5/16-18 Adjustable Handles
- (3) 5/16 Flat Washers
- 4mm Hex Key
- Velcro Strap
- Package of Saw-Specific Hardware (Milwaukee or DeWalt)

Table Assembly

1. Begin by assembling the side plates to the center brace with (6) of the M6-1.0 flat head screws. Note the orientation of center brace tabs in the photo. Leave this hardware loose until the completion of step 2.



2. Install the top plate onto the side plates and center brace with the remaining (12) M6-1.0 flat head screws. Leave each screw loose until all are started, and then go back and progressively tighten all 18 screws starting with the center of the top plate and working out and down.



3. Three 5/16-18 adjustable handles are provided to secure either the fixed fence (A) or adjustable fence. If using the adjustable fence only two handles will be used and the washers are omitted (B).



A

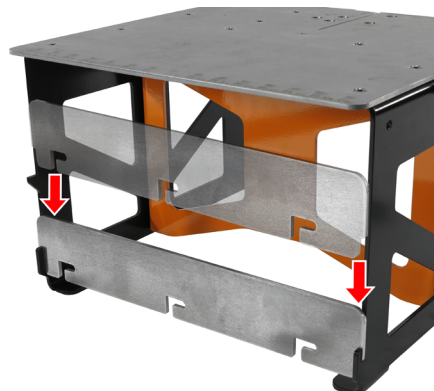


B

Fence Storage

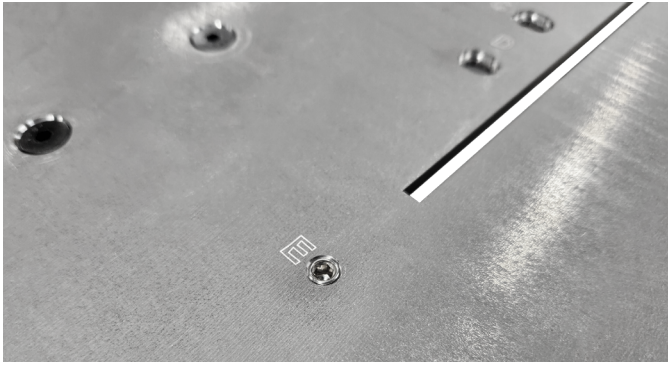
The table features built-in storage for both fence options.

The fixed fence stores on the front, while the adjustable fence stores on the side of the table with a cutout.



Milwaukee Models 6232-20, 6232-21, 6238-20, 6238-21, and 2729

- 1.** Install the 7/8" long stainless-steel set screw in threaded hole labeled **E**. The top of the set screw should be flush or just slightly below the table surface. A small amount of red thread locker can be helpful to retain this set screw but is not required.



- 2.** Install the set screw & locknut combination hardware into threaded hole labeled **B** with the lock nut on the bottom of the table. Do not remove or adjust the locknut. At this time, the top of the set screw can be well above the table surface.



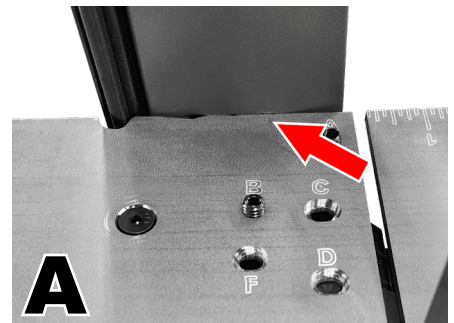
- 3.** Install the 3/8" long set screw into threaded hole labeled **A**. The top of the set screw should be left well above the table surface.



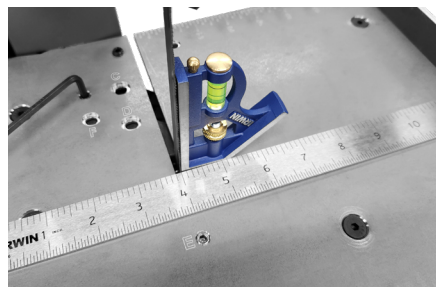
- 4.** Remove battery from cordless saw or unplug corded model. Position the saw material guide into its most extended position.



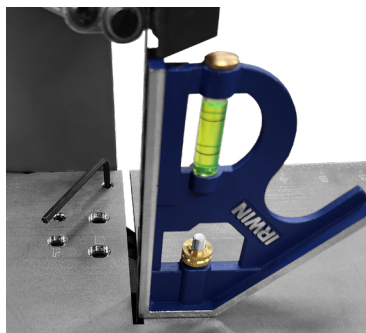
- 5.** Slide the saw onto the table until the profiled portion of the table engages the slot in the saw (**A**). Clamp the washer and hand knob to the bottom of the saw guide (**B**).



- 6.** Using the included 4mm hex key, tighten the set screw in **B** until snug. It should stop slightly below the surface of the table. Pay close attention to keep the blade centered in the blade slot. This can be confirmed by positioning the blade 8 inches from the fixed fence.



- 7.** Using the same hex key and small square, tighten the set screw in **A** until the saw blade is square with the table.

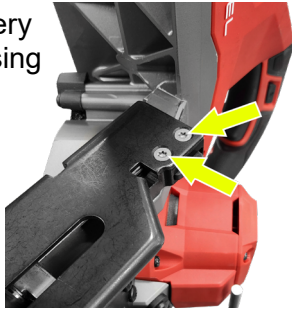


- 8.** When you are ready to cut, use the included Velcro strap to engage the trigger on the saw. An optional momentary foot switch, p/n S100-1501, is especially useful with corded saws and connects in-line with the power cord for the saw.

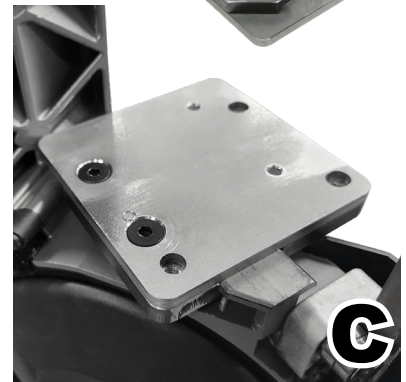
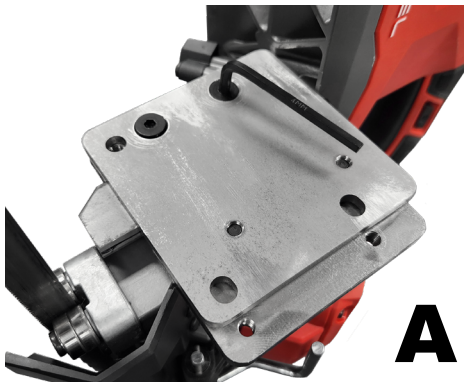


Milwaukee Model 2929

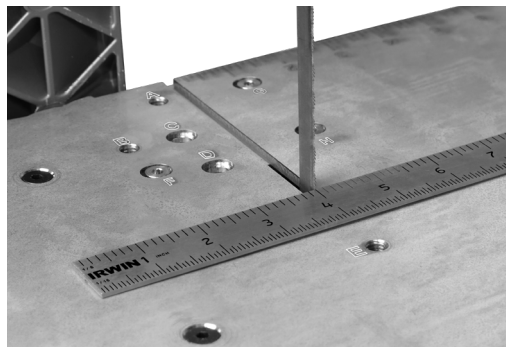
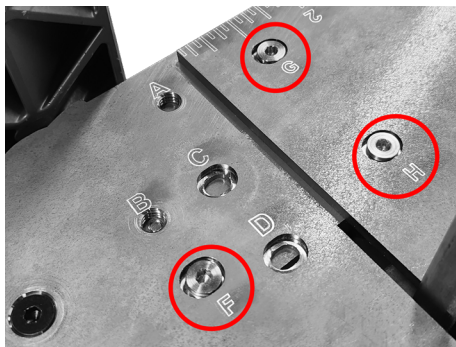
- 1.** Remove battery from the saw. Using a T20 Torx bit, remove the two bolts on the factory material guide.



- 2.** Install the adapter plate assembly on the saw as shown. All four screws should be slightly loose when fitting the assembly to the saw. Using the 4mm hex key, tighten the counter sunk screws first (**A**), followed by the button head screws (**B**). The adapter plate should fit snug around the T-shaped flange and be positioned against back of the saw frame (**C**).



- 3.** Using the 3 flat-head low-profile screws, attach the assembled saw & adapter plate to the table at holes F, G, and H. Locate the center of the blade 8" from the fixed fence. Tighten these screws once the blade is centered.



- 4.** When you are ready to cut, use the included Velcro strap to engage the trigger on the saw.



Milwaukee Blade Alignment Shims (All models)

Some Milwaukee saws have a minor blade guide alignment issue that causes the blade to be twisted between the front and rear blade guides. We provide two stainless steel shims to adjust this alignment if required.

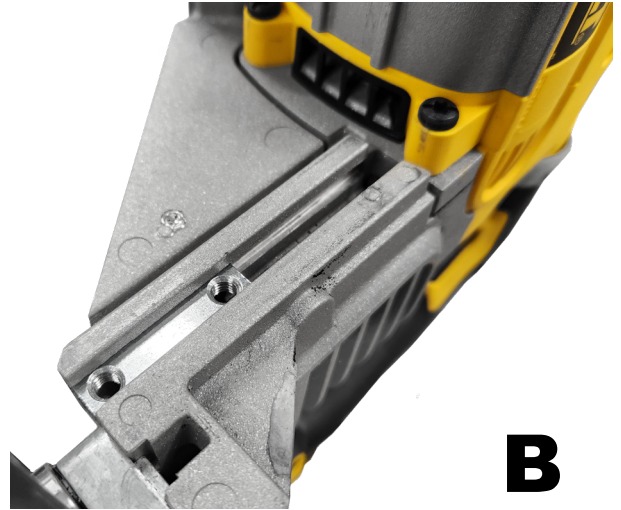


1. Remove the saw blade.
2. Using a T25 Torx bit, remove the two screws retaining the plastic blade guard closest to the blade guide.
3. Using a T25 Torx, loosen the two bolts holding the blade guide.
4. Place one shim between the guide block and body of the saw as shown in the photo to the right.
5. Retighten blade guide screws, reinstall blade, and check blade alignment. In rare instances, a second shim is needed to complete the alignment. Install it in the same position as the first.
6. Reinstall the plastic guard retaining screws.

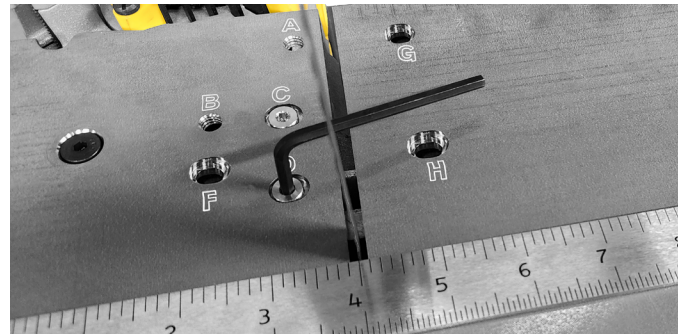


DeWalt Models DWM120 and DCS374

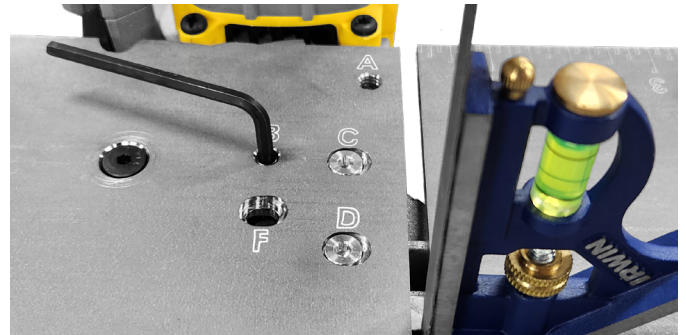
- 1.** Remove battery from cordless saw or unplug corded model. Remove the factory material guide using the 5mm hex key included with the DeWalt saw (A). Position the threaded plate close to the blade (B).



- 2.** Position the saw as shown and use the two flat-head low-profile screws in holes C & D to secure the saw to the table. Adjustments can be made left and right to center the blade in the slot. Locate the center of the blade 8" from the fixed fence. Tighten these screws once the blade is centered.



- 3.** Install the 1/2" long set screw into threaded hole labeled B. Using the included 4mm hex key, and a small square, tighten this set screw until the saw blade is square with the table. This should be achieved with the top of the set screw slightly below the surface of the table. Note- it may be necessary to slightly loosen the screws in C & D during this process.



- 4.** When you are ready to cut, use the included Velcro strap to engage the trigger on the saw.



An optional momentary foot switch, p/n S100-1501, is especially useful with corded saws and connects in-line with the power cord for the saw.

PORTABANDPRO  MADE IN THE USA

For more information,
visit our website

www.portabandpro.com